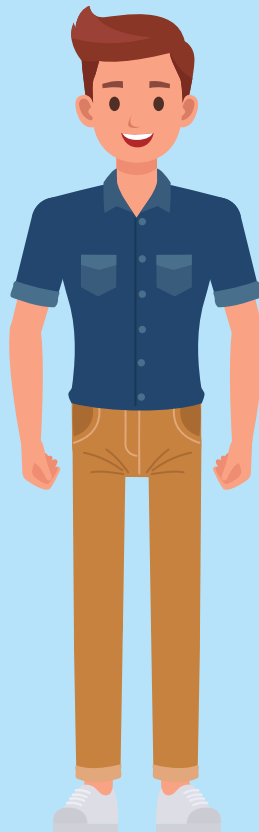


GETTING A BLOOD TEST



Sometimes the doctors need
to look at my blood to learn
about how my body is
working.

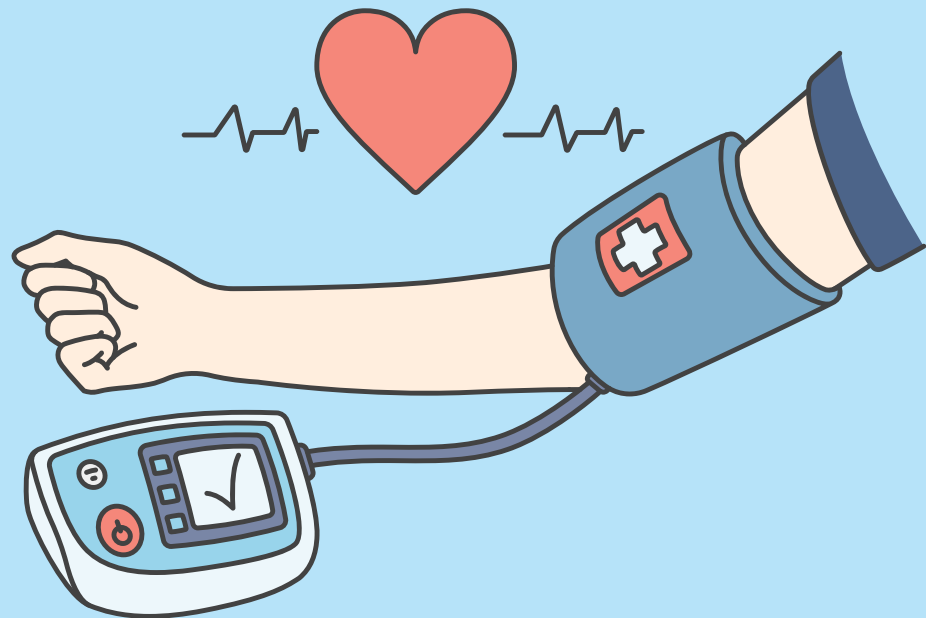


To look at my blood, a nurse
will have to take a little bit
out of my arm.

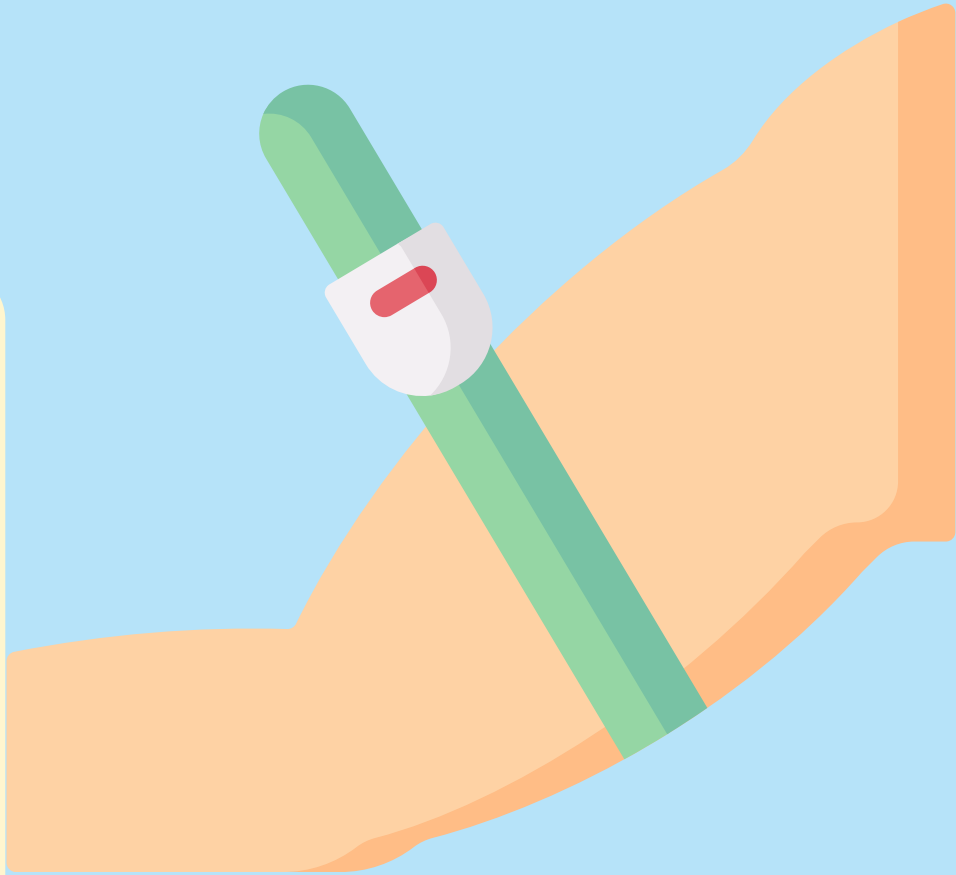


First, the nurse will put a cuff on my arm to test my blood pressure. The cuff will inflate and squeeze my arm.

It's a little bit tight!



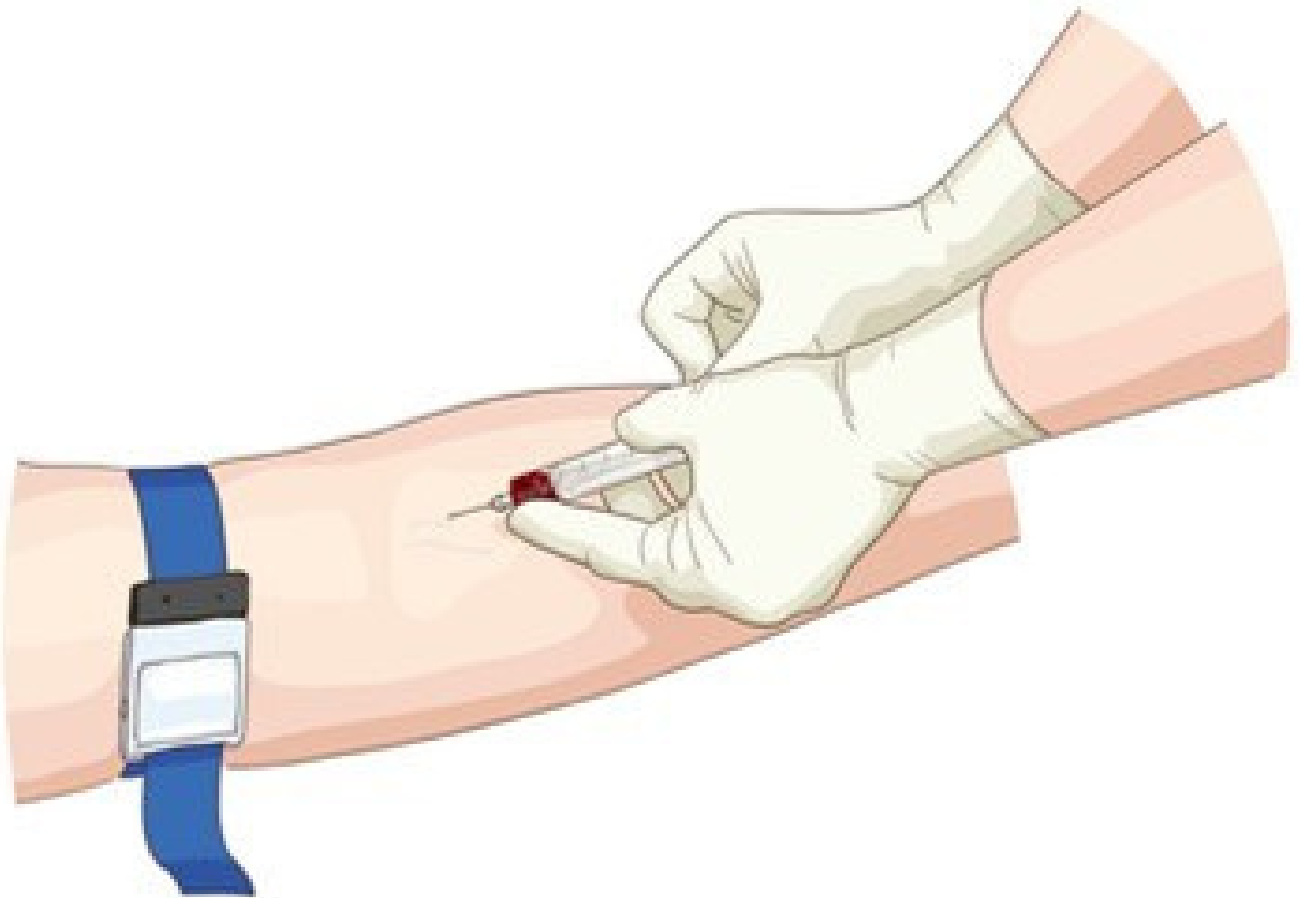
Then the nurse will take the cuff off and put a strap around my arm. This might feel tight too.



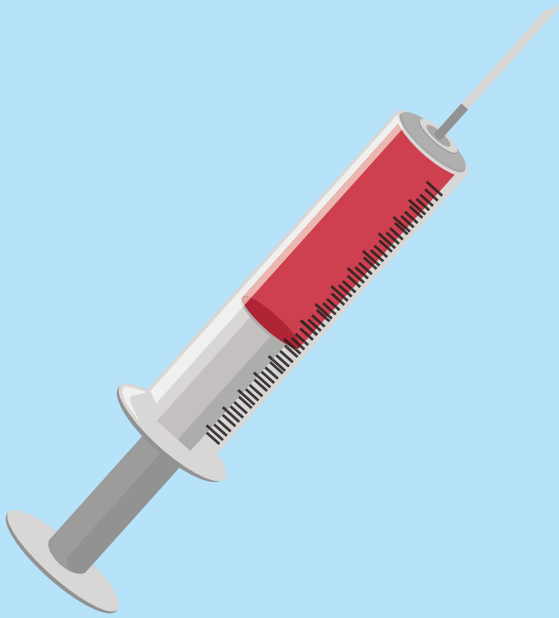
**Then they will clean the
inside part of my arm. This
might be a bit cold!**



The nurse will then gently push the needle into my arm. This will sting a little bit but not for long.



The plastic part attached to the needle is called a syringe. Some blood from my arm will go through the needle into the syringe.



Once the syringe is full, the nurse will take the needle out of my arm and put a cotton bud on it to stop any bleeding.

**Blood tests don't
take long so
before I know it,
it's all done!**

